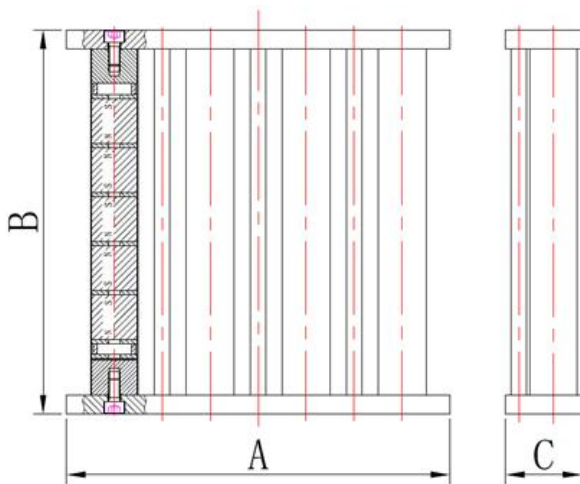


Magnetic Grids with Rectangular Version

- Strong magnet circuit design, Max. surface Gauss value could achieve 12'000Gs;
- No "zero" magnetic area exist;
- Waterproof and well polished magnetic bars;
- Easy-clean type and food class can be provided on request;
- With Circular version, Rectangular version, and Cylinder version available to fit any size or shape of hopper;
- Customizing and designing according to the application.

Rectangular Version

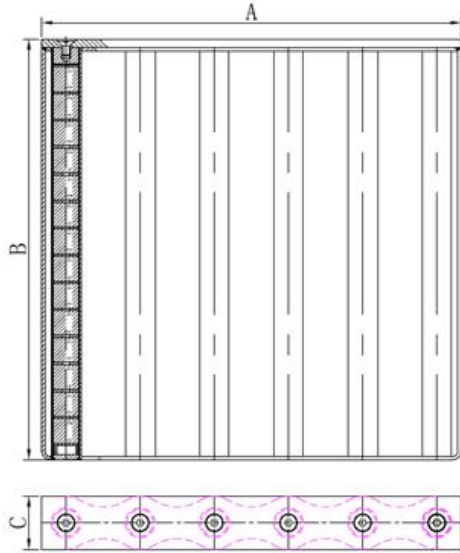


Rectangular Version							
ITEM No. (Ferrite series)	ITEM No. (NdFeB series)	No. Bars	Dimensions (mm)			Approx. Before Packing Wt.(kg)	
			A	B	C	Ferrite series	NdFeB series
OEYF2H0001	OEYF5H0001	3	100	100	40	0.7	0.8
OEYF2H0002	OEYF5H0002	3	150	150	40	2.2	2.5
OEYF2H0003	OEYF5H0003	4	200	200	40	3.6	4.2
OEYF2H0004	OEYF5H0004	5	250	250	40	5.3	6.3
OEYF2H0005	OEYF5H0005	6	300	300	40	7.3	8.9
OEYF2H0006	OEYF5H0006	8	400	400	40	12.1	15.2
OEYF2H0007	OEYF5H0007	10	500	500	40	18.6	23.7
OEYF2H0008	OEYF5H0008	12	600	600	40	26	33.5



Rectangular Version with Easy Clean Structure

- Specifically designed for using in closed chutes and ducts.
- Easily inspected and cleaned.
- Come complete with handle and latches.



Rectangular version with easy clean structure				
ITEM No. (Ferrite series)	ITEM No. (NdFeB series)	Dimensions (mm)		
		A	B	C
OEYF2H0080	OEYF5H0080	280	150	40
OEYF2H0081	OEYF5H0081	396	396	50
OEYF2H0082	OEYF5H0082	150	150	30
OEYF2H0085	OEYF5H0085	300	200	50
OEYF2H0086	OEYF5H0086	100	100	30