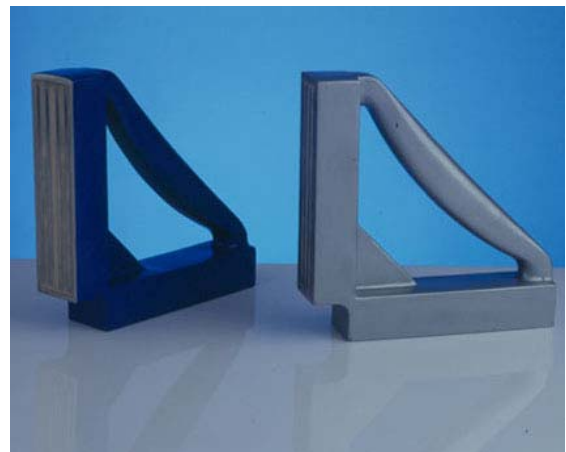
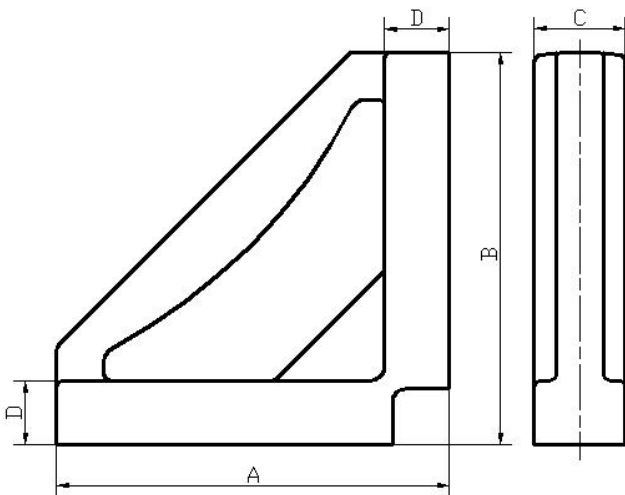


Magnetic Welding Fixtures

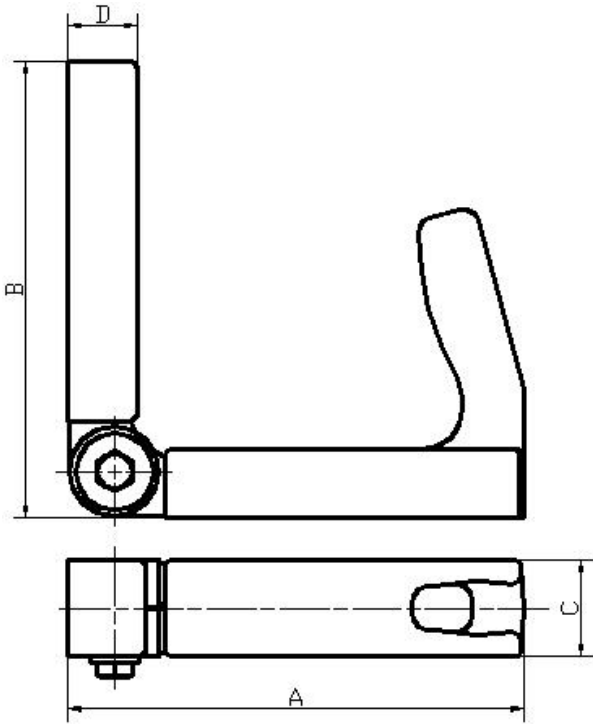
- Fast, easy and secure way to hold work pieces in place for welding.
- Die-cast aluminum (a sturdy, economy and nonmagnetic material) housing with powerful magnets inside.
- Plastic painted with optional colors.
- With an adjustable or fixed 90° angle available.

Heavy-Duty Fixed Fixtures



Heavy-Duty Fixed Fixture						
ITEM No.	Dimensions (mm)				Weight (kg)	Holding Force (kg)
	A	B	C	D		
OEYK2H0001	207	207	48	34	2.7	180

Heavy-Duty Variable Fixtures

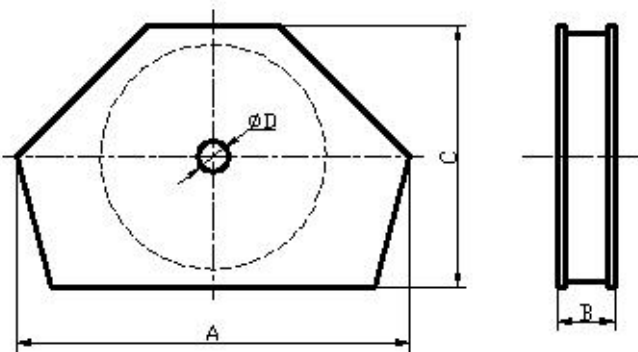


Heavy-Duty Variable Fixture						
ITEM No.	Dimensions (mm)				Weight (kg)	Holding Force (kg)
	A	B	C	D		
OEYK2R0001	225	225	48	34	2.9	180

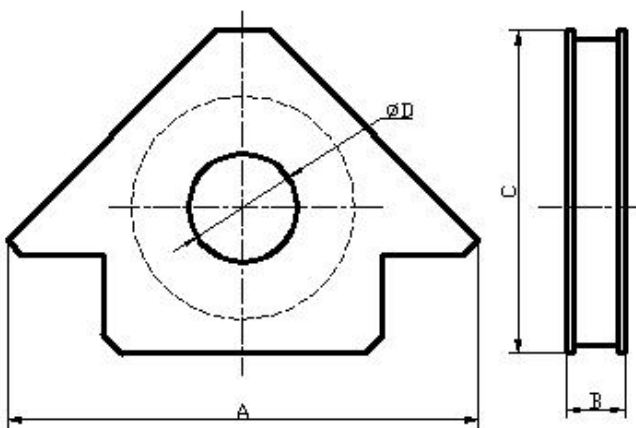
Multi-angle Welding Fixtures



- Fast and accurately holding flat and round ferrous components.
- Various angles available from 30°, 45°, 60°, 75°, 90°, to 180°



Multi-angle Welding Fixtures I					
ITEM No.	Dimensions (mm)				Weight (kg)
	A	B	C	D	
OEYK2Q0001	96	14	64	7.5	0.3



Multi-angle Welding Fixtures II					
ITEM No.	Dimensions (mm)				Weight (kg)
	A	B	C	D	
OEYK2Q0002	120	14	82	/	0.3
OEYK2Q0003	160	20	102	28	0.7
OEYK2Q0004	200	22	128	40	1.3
OEYK2Q0005	120	14	82	24	0.3

