

Pipeline Magnetic Separator

Pipeline Magnetic Separator – Standard version

Design for pressure-operated conveying fluid, pulp and fine powder in the production line. Surface gauss value can get to more than 12'000Gs, Housing of magnetic separator is made by stainless steel AISI304 with polished finish to meet the requirement of food and pharmacy industry.

Easy-cleaning structure to wipe off Fe particles conveniently and efficiently.

Be widely used in processing industry of edible oil, food and pharmacy to filter all kinds of ferromagnetic particles from fluid, pulp and fine powder efficiently and safely.

Technical data

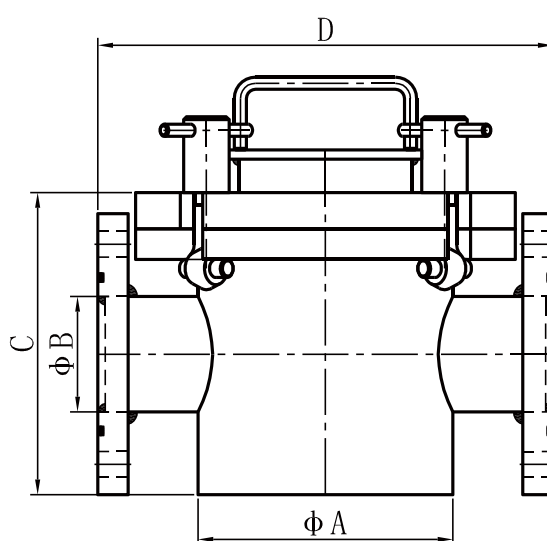
Magnetic performance: 8'000Gs-12'000Gs

Materials of housing and other parts: 304 stainless steel/316 stainless steel

Surface finish: Polished/Sand blasting/Powder painting



Pipeline Normal Diameter	Model No.	A mm	B mm	C mm	D mm
DN25	SCXD25	159	25	157	350
DN32	SCXD32	159	32	157	350
DN40	SCXD40	159	40	157	350
DN50	SCXD50	159	50	157	350
DN65	SCXD65	159	65	157	350
DN80	SCXD80	159	80	215	390
DN100	SCXD100	159	100	239	390
DN125	SCXD125	272	125	299	503
DN150	SCXD150	320	150	345	650
DN200	SCXD200	320	200	380	650



Beijing OeMag International Co., Ltd

Tel: +86-10-67609550; Fax: +86-10-67609565; E-mail: oeimag@oeimag.com